

AP - 15

Présenté par :

Yassir Chellik ET Gaetan Bracale

Année 2024 - 2025

1. Prérequis

- La configuration de Pfsense doit être terminée avant d'activer le portail captif.
- La mise en place du Wifi Cisco doit être faite avant les tests d'accès.
- Le portail captif doit être désactivé avant l'installation de la borne Unifi et FreeRadius3.
- La configuration SNMP doit être faite avant l'implémentation du script BASH.

1. Avant toute chose nous avons commencé à écrire le gantt pour indiquer notre avancée

Composantes du projet		Tâches ou WBS		Antécédent(s)	Durée en heure	Affectée à
Lettre	Ap - 15 Installation et configuration de Pfsense avec portail captif et authentification Wifi	Antécédent(s)	Durée en heure	Affectée à		
A	1. Création VM SnyPfsense			Yassir / Gaetan		
B	2. Installation Pfsense			Yassir / Gaetan		
C	3. Configuration portail captif			Yassir / Gaetan		
D	4. HTTPS authentification			Yassir / Gaetan		
E	5. Mise en place Wifi Cisco			Yassir / Gaetan		
F	6. Test accès Wifi			Yassir / Gaetan		
G	7. Désactivation portail captif			Yassir / Gaetan		
H	8. Branchement borne Unifi			Yassir / Gaetan		
I	9. Configuration Unifi Server			Yassir / Gaetan		
J	10. Installation FreeRadius3			Yassir / Gaetan		
K	11. Configuration SNMP			Yassir / Gaetan		
L	12. Implémentation script BASH			Yassir / Gaetan		

Colonne I (NE PAS TOUCHER)

formule appliquée pour les heures en vingt-quatrième d'heure =(nb heures/24)

Colonne D : Indiquer une lettre de A à Z

Colonne E : Indiquer le nom de la tâche

Colonne F : Indiquer une date/heure sous le format JJ/MM/AAAA HH:MM:SS

Colonne G : Indiquer la/les lettre(s) correspondante(s) à/aux tâche(s) antécédente(s)

Colonne H : Indiquer la durée en heure

Colonne J : Indiquer le nom de la personne affectée à la tâche

A faire absolument

Pensez à modifier la durée

Pour cela, utilisez le menu "Format" dans le champ "Min", il

Ajoutez une série pour commencer à visualiser vos données

Ap - 15 Yassir / Gaetan Installation et configuration de Pf...

2.

Nous allons commencer par créer une nouvelle VM intitulé SrvPfsense et nous allons configurer la carte réseau dans notre VLAN où se situent nos serveurs habituels. Notre VLAN doit notamment avoir un accès vers Internet. Nous allons également ajouter une deuxième carte réseau ; à placer dans le VLAN « internet » et Insérer l'image ISO de Pfsense

Create: Virtual Machine

General

OS

System

Disks

CPU

Memory

Network

Confirm

Node:

siopve-grp1

VM ID:

2038

Name:

SrvPfsense

Resource Pool:

?

 Help

Advanced ☐

Back

Next

Create: Virtual Machine

General

OS

System

Disks

CPU

Memory

Network

Confirm

Mise en place de l'os sur la vm :

Create: Virtual Machine

General

OS

System

Disks

CPU

Memory

Network

Confirm

☒ Use CD/DVD disc image file (iso)

Storage: iso

ISO image: -RELEASE-amd64.iso

Guest OS:

Type: Linux

Version: 6.x - 2.6 Kernel

☐ Use physical CD/DVD Drive

☐ Do not use any media

Le système :

Create: Virtual Machine

General

OS

System

Disks

CPU

Memory

Network

Confirm

Graphic card: Default

Machine: Default (i440fx)

Firmware

BIOS: Default (SeaBIOS)

SCSI Controller: VirtIO SCSI single

Qemu Agent: ☐

Add TPM: ☐

Le disque :

Create: Virtual Machine

General

OS

System

Disks

CPU

Memory

Network

Confirm

scsi0

Disk

Bandwidth

Bus/Device:

SCSI

0

Cache:

Default (No cache)

SCSI Controller:

VirtIO SCSI single

Discard:

☐

Storage:

local-lvm

IO thread:

☒

Disk size (GiB):

16

Format:

Raw disk image (raw)

Création de deux cartes réseau, VLAN LAN et Internet.

Add: Network Device

Bridge: vmbro0 Model: VirtIO (paravirtualized)

VLAN Tag: 434 MAC address: auto

Firewall: ☒

Help Advanced Add

8.2.4 Search Docu

Virtual Machine 2026 (server-graylog) on node 'siopve-grp1' gipi-agent

Summary

Hardware

Cloud-Init

Options

Task History

Monitor

Backup

Replication

Snapshots

Memory

Processors

BIOS

Display

Machine

SCSI Controller

CD/DVD Drive (ide2)

Hard Disk (scsi0)

Network Device (net0)

Network Device (net1)

4.00 GiB

1 (1 sockets, 1 cores) [x86-64-v2-AES]

Default (SeaBIOS)

Default

Default (i440fx)

VirtIO SCSI single

iso:iso/debian-9.13.0-amd64-netinst.iso,media=cdrom,size=292M

local-vm:vm-2026-disk-0,iothread=1,size=32G

virtio=BC:24:11:01:E3:66,bridge=vmbro0,firewall=1,tag=431

virtio=BC:24:11:21:3D:A4,bridge=vmbro0,firewall=1,tag=434

pfSense Installer

Copyright and distribution notice

Copyright and Trademark Notices.

Copyright 2004-2016. Electric Sheep Fencing, LLC ("ESF"). All Rights Reserved.

Copyright 2014-2023. Rubicon Communications, LLC d/b/a Netgate ("Netgate"). All Rights Reserved.

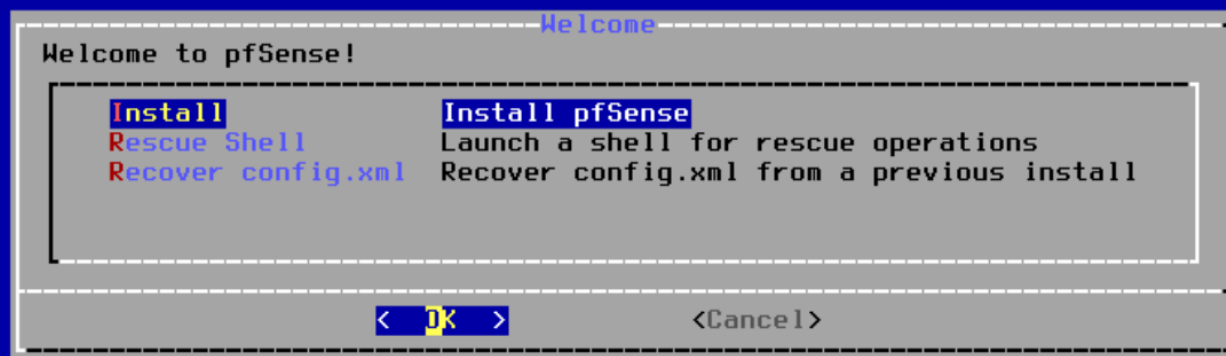
All logos, text, and content of ESF and/or Netgate, including underlying HTML code, designs, and graphics used and/or depicted herein are protected under United States and international copyright and trademark laws and treaties, and may not be used or reproduced without the prior express written permission of ESF and/or Netgate.

"pfSense" is a registered trademark of ESF, exclusively licensed to Netgate, and may not be used without the prior express written permission of ESF and/or Netgate. All other trademarks shown herein are

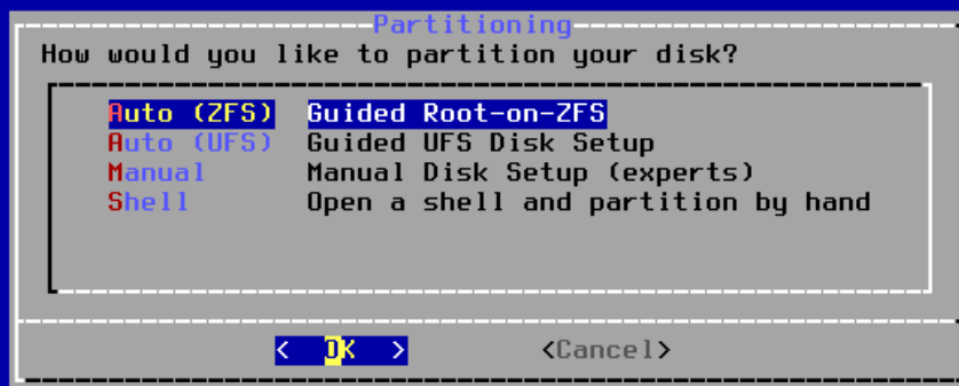
26%

[Accept]

pfSense Installer



pfSense Installer



To use ZFS with less than 8GB RAM, see <https://wiki.freebsd.org/ZFSTuningGuide>

pfSense Installer

-----ZFS Configuration-----

Configure Options:

>>> Install	Proceed with Installation
T Pool Type/Disks:	stripe: 0 disks
- Rescan Devices	*
- Disk Info	*
N Pool Name	pfSense
4 Force 4K Sectors?	YES
E Encrypt Disks?	NO
P Partition Scheme	GPT (BIOS)
S Swap Size	1g
M Mirror Swap?	NO
W Encrypt Swap?	NO

<Select> <Cancel>

---[Use alnum, arrows, punctuation, TAB or ENTER]---

Create ZFS boot pool with displayed options

pfSense Installer

-----ZFS Configuration-----

Select Virtual Device type:

stripe	Stripe - No Redundancy
mirror	Mirror - n-Way Mirroring
raid10	RAID 1+0 - n x 2-Way Mirrors
raidz1	RAID-Z1 - Single Redundant RAID
raidz2	RAID-Z2 - Double Redundant RAID
raidz3	RAID-Z3 - Triple Redundant RAID

< OK > <Cancel>

---[Press arrows, TAB or ENTER]---

[1+ Disks] Striping provides maximum storage but no redundancy



pfSense Installer

ZFS Configuration

Last Chance! Are you **sure** you want to **destroy** the current contents of the following disks:

da0

< **YES** >

< **NO** >

[Press arrows, TAB or ENTER]

pfSense Installer

Checksum Verification

base.txz

[In Progress]

Verifying checksums of selected distributions.

Overall Progress

0%

pfSense Installer

Complete

Installation of pfSense complete!
Would you like to reboot into the
installed system now?

[Reboot]

[Shell]

SeaBIOS (version rel-1.16.3-0-ga6ed6b701f0a-prebuilt.qemu.org)
Machine UUID cce8f1df-2a26-403a-a851-300a4b86db1b
Booting from Hard Disk...
BIOS drive C: is disk0
↵

```

done.
Initializing..... done.
Starting device manager (devd)...done.
Loading configuration....done.
Updating configuration....done.
Warning: Configuration references interfaces that do not exist: em0 em1

Network interface mismatch -- Running interface assignment option.
vtnet0: link state changed to UP
vtnet1: link state changed to UP

Valid interfaces are:

vtnet0  bc:24:11:6e:10:f2 (down) VirtIO Networking Adapter
vtnet1  bc:24:11:3d:b7:64 (down) VirtIO Networking Adapter

Do VLANs need to be set up first?
If VLANs will not be used, or only for optional interfaces, it is typical to
say no here and use the webConfigurator to configure VLANs later, if required.

Should VLANs be set up now [yln]? 2025-03-04T15:42:37.307035+00:00 - php-fpm 396
- - /rc.linkup: Ignoring link event during boot sequence.
2025-03-04T15:42:37.312056+00:00 - php-fpm 395 - - /rc.linkup: Ignoring link eve
nt during boot sequence.

```

```

done.
Initializing..... done.
Starting device manager (devd)...done.
Loading configuration....done.
Updating configuration....done.
Warning: Configuration references interfaces that do not exist: em0 em1

Network interface mismatch -- Running interface assignment option.
vtnet0: link state changed to UP
vtnet1: link state changed to UP

Valid interfaces are:

vtnet0  bc:24:11:6e:10:f2 (down) VirtIO Networking Adapter
vtnet1  bc:24:11:3d:b7:64 (down) VirtIO Networking Adapter

Do VLANs need to be set up first?
If VLANs will not be used, or only for optional interfaces, it is typical to
say no here and use the webConfigurator to configure VLANs later, if required.

Should VLANs be set up now [yln]? 2025-03-04T15:42:37.307035+00:00 - php-fpm 396
- - /rc.linkup: Ignoring link event during boot sequence.
2025-03-04T15:42:37.312056+00:00 - php-fpm 395 - - /rc.linkup: Ignoring link eve
nt during boot sequence.
y

```

```

vtnet1: link state changed to UP

Valid interfaces are:

vtnet0  bc:24:11:6e:10:f2 (down) VirtIO Networking Adapter
vtnet1  bc:24:11:3d:b7:64 (down) VirtIO Networking Adapter

Do VLANs need to be set up first?
If VLANs will not be used, or only for optional interfaces, it is typical to
say no here and use the webConfigurator to configure VLANs later, if required.

Should VLANs be set up now [yln]? 2025-03-04T15:42:37.307035+00:00 - php-fpm 396
- - /rc.linkup: Ignoring link event during boot sequence.
2025-03-04T15:42:37.312056+00:00 - php-fpm 395 - - /rc.linkup: Ignoring link eve
nt during boot sequence.
y

VLAN Capable interfaces:

vtnet0  bc:24:11:6e:10:f2    (up)
vtnet1  bc:24:11:3d:b7:64    (up)

Enter the parent interface name for the new VLAN (or nothing if finished):
y

VLAN Capable interfaces:

vtnet0  bc:24:11:6e:10:f2    (up)
vtnet1  bc:24:11:3d:b7:64    (up)

Enter the parent interface name for the new VLAN (or nothing if finished):
▶

If the names of the interfaces are not known, auto-detection can
be used instead. To use auto-detection, please disconnect all
interfaces before pressing 'a' to begin the process.

Enter the WAN interface name or 'a' for auto-detection
(vtnet0 vtnet1 or a): a

Connect the WAN interface now and make sure that the link is up.
Then press ENTER to continue.

No link-up detected.

Enter the WAN interface name or 'a' for auto-detection
(vtnet0 vtnet1 or a): vtnet0

```

VLAN Capable interfaces:

```
vtnet0  bc:24:11:6e:10:f2    (up)
vtnet1  bc:24:11:3d:b7:64    (up)
```

Enter the parent interface name for the new VLAN (or nothing if finished):

If the names of the interfaces are not known, auto-detection can be used instead. To use auto-detection, please disconnect all interfaces before pressing 'a' to begin the process.

Enter the WAN interface name or 'a' for auto-detection (vtnet0 vtnet1 or a): a

Connect the WAN interface now and make sure that the link is up. Then press ENTER to continue.

No link-up detected.

Enter the WAN interface name or 'a' for auto-detection (vtnet0 vtnet1 or a): vtnet0

Enter the LAN interface name or 'a' for auto-detection
NOTE: this enables full Firewalling/NAT mode.
(vtnet1 a or nothing if finished): vtnet1

If the names of the interfaces are not known, auto-detection can be used instead. To use auto-detection, please disconnect all interfaces before pressing 'a' to begin the process.

Enter the WAN interface name or 'a' for auto-detection (vtnet0 vtnet1 or a): a

Connect the WAN interface now and make sure that the link is up. Then press ENTER to continue.

No link-up detected.

Enter the WAN interface name or 'a' for auto-detection (vtnet0 vtnet1 or a): vtnet0

Enter the LAN interface name or 'a' for auto-detection
NOTE: this enables full Firewalling/NAT mode.
(vtnet1 a or nothing if finished): vtnet1

The interfaces will be assigned as follows:

```
WAN  -> vtnet0
LAN  -> vtnet1
```

Do you want to proceed [y|n]? y

```
(vtnet1 a or nothing if finished): vtnet1
```

```
The interfaces will be assigned as follows:
```

```
WAN -> vtnet0
```

```
LAN -> vtnet1
```

```
Do you want to proceed [y/n]? y\
```

```
Configuring loopback interface...done.
```

```
Configuring LAN interface...done.
```

```
Configuring WAN interface...done.
```

```
Warning: Configuration references interfaces that do not exist: em0 em1
```

```
Network interface mismatch -- Running interface assignment option.
```

```
Valid interfaces are:
```

```
vtnet0 bc:24:11:6e:10:f2 (down) VirtIO Networking Adapter
```

```
vtnet1 bc:24:11:3d:b7:64 (down) VirtIO Networking Adapter
```

```
Do VLANs need to be set up first?
```

```
If VLANs will not be used, or only for optional interfaces, it is typical to  
say no here and use the webConfigurator to configure VLANs later, if required.
```

```
Should VLANs be set up now [y/n]? ☐
```

```
Configuring LAN interface...done.
```

```
Configuring WAN interface...done.
```

```
Warning: Configuration references interfaces that do not exist: em0 em1
```

```
Network interface mismatch -- Running interface assignment option.
```

```
Valid interfaces are:
```

```
vtnet0 bc:24:11:6e:10:f2 (down) VirtIO Networking Adapter
```

```
vtnet1 bc:24:11:3d:b7:64 (down) VirtIO Networking Adapter
```

```
Do VLANs need to be set up first?
```

```
If VLANs will not be used, or only for optional interfaces, it is typical to  
say no here and use the webConfigurator to configure VLANs later, if required.
```

```
Should VLANs be set up now [y/n]? y
```

```
VLAN Capable interfaces:
```

```
vtnet0 bc:24:11:6e:10:f2 (up)
```

```
vtnet1 bc:24:11:3d:b7:64 (up)
```

```
Enter the parent interface name for the new VLAN (or nothing if finished): 431
```



```

vtnet0  bc:24:11:6e:10:f2    (up)
vtnet1  bc:24:11:3d:b7:64    (up)

Enter the parent interface name for the new VLAN (or nothing if finished): vtnet
0
Enter the VLAN tag (1-4094): 431

VLAN Capable interfaces:
▶
vtnet0  bc:24:11:6e:10:f2    (up)
vtnet1  bc:24:11:3d:b7:64    (up)

Enter the parent interface name for the new VLAN (or nothing if finished): vtnet
1
Enter the VLAN tag (1-4094): 434

VLAN Capable interfaces:
vtnet0  bc:24:11:6e:10:f2    (up)
vtnet1  bc:24:11:3d:b7:64    (up)

Enter the parent interface name for the new VLAN (or nothing if finished): █

Enter the parent interface name for the new VLAN (or nothing if finished): vtnet
1
Enter the VLAN tag (1-4094): 434

VLAN Capable interfaces:
vtnet0  bc:24:11:6e:10:f2    (up)
▶ vtnet1  bc:24:11:3d:b7:64    (up)

Enter the parent interface name for the new VLAN (or nothing if finished):

VLAN interfaces:

vtnet0.431      VLAN tag 431, parent interface vtnet0
vtnet1.434      VLAN tag 434, parent interface vtnet1

If the names of the interfaces are not known, auto-detection can
be used instead. To use auto-detection, please disconnect all
interfaces before pressing 'a' to begin the process.

Enter the WAN interface name or 'a' for auto-detection
(vtnet0 vtnet1 vtnet0.431 vtnet1.434 or a): █

```

```

Starting device manager (devd)...devd: Can't open devctl device /dev/devctl: Device busy
done.
Loading configuration....done.
Updating configuration...done.
Checking config backups consistency.....done.
Setting up extended sysctls...done.
Setting timezone...done.
Configuring loopback interface...done.
Starting syslog...done.
Setting up interfaces microcode...done.
Removed leftover dhcp6c lock file: /tmp/dhcp6c_lock
Configuring loopback interface...done.
Configuring VLAN interfaces...vlan0: changing name to 'vtnet0.434'
vlan1: changing name to 'vtnet1.431'
done.
Configuring WAN interface...done.
Configuring CARP settings...done.
Syncing OpenVPN settings...done.
Configuring firewall.....done.
Starting PFLOG...done.
Setting up gateway monitors...done.
Setting up static routes...done.
Setting up DNSs...
Starting DNS Resolver...

```

```

vtnet1.434      VLAN tag 434, parent interface vtnet1

```

```

If the names of the interfaces are not known, auto-detection can
be used instead. To use auto-detection, please disconnect all
interfaces before pressing 'a' to begin the process.

```

```

Enter the WAN interface name or 'a' for auto-detection
(vtnet0 vtnet1 vtnet0.434 vtnet1.431 vtnet0.431 vtnet1.434 or a): vtnet0.

```

```

Invalid interface name 'vtnet0.'

```

```

Enter the WAN interface name or 'a' for auto-detection
(vtnet0 vtnet1 vtnet0.434 vtnet1.431 vtnet0.431 vtnet1.434 or a): vtnet0

```

```

Enter the LAN interface name or 'a' for auto-detection
NOTE: this enables full Firewalling/NAT mode.
(vtnet1 vtnet0.434 vtnet1.431 vtnet0.431 vtnet1.434 a or nothing if finished):

```

```

The interfaces will be assigned as follows:

```

```

WAN -> vtnet0

```

```

Do you want to proceed [y|n]? t
y

```

```
3) Reset webConfigurator password    12) PHP shell + pfSense tools
4) Reset to factory defaults          13) Update from console
5) Reboot system                     14) Enable Secure Shell (sshd)
6) Halt system                       15) Restore recent configuration
7) Ping host                         16) Restart PHP-FPM
8) Shell
```

Enter an option:

QEMU Guest - Netgate Device ID: d85c39be769955fdc197

*** Welcome to pfSense 2.7.2-RELEASE (amd64) on pfSense ***

WAN (wan) -> vtnet0 ->

```
0) Logout (SSH only)                 9) pfTop
1) Assign Interfaces                 10) Filter Logs
2) Set interface(s) IP address       11) Restart webConfigurator
3) Reset webConfigurator password    12) PHP shell + pfSense tools
4) Reset to factory defaults         13) Update from console
5) Reboot system                     14) Enable Secure Shell (sshd)
6) Halt system                       15) Restore recent configuration
7) Ping host                         16) Restart PHP-FPM
8) Shell
```

Enter an option:

```
0) Logout (SSH only)                 9) pfTop
1) Assign Interfaces                 10) Filter Logs
2) Set interface(s) IP address       11) Restart webConfigurator
3) Reset webConfigurator password    12) PHP shell + pfSense tools
4) Reset to factory defaults         13) Update from console
5) Reboot system                     14) Enable Secure Shell (sshd)
6) Halt system                       15) Restore recent configuration
7) Ping host                         16) Restart PHP-FPM
8) Shell
```

Enter an option: 2

Configure IPv4 address WAN interface via DHCP? (y/n) y

Configure IPv6 address WAN interface via DHCP6? (y/n) n

Enter the new WAN IPv6 address. Press <ENTER> for none:

>

Disabling IPv4 DHCPD...

Disabling IPv6 DHCPD...

Do you want to revert to HTTP as the webConfigurator protocol? (y/n) y

Please wait while the changes are saved to WAN...

QEMU Guest - Netgate Device ID: d85c39be769955fdc197

*** Welcome to pfSense 2.7.2-RELEASE (amd64) on pfSense ***

WAN (wan) -> vtnet0 ->
LAN (lan) -> vtnet1 ->

- | | |
|-----------------------------------|----------------------------------|
| 0) Logout (SSH only) | 9) pfTop |
| 1) Assign Interfaces | 10) Filter Logs |
| 2) Set interface(s) IP address | 11) Restart webConfigurator |
| 3) Reset webConfigurator password | 12) PHP shell + pfSense tools |
| 4) Reset to factory defaults | 13) Update from console |
| 5) Reboot system | 14) Enable Secure Shell (sshd) |
| 6) Halt system | 15) Restore recent configuration |
| 7) Ping host | 16) Restart PHP-FPM |
| 8) Shell | |

Enter an option: 2

Available interfaces:

- 1 - WAN (vtnet0 - dhcp)
- 2 - LAN (vtnet1)

Enter the number of the interface you wish to configure: █

Reloading filter...
Reloading routing configuration...
DHCPD...

The IPv4 WAN address has been set to 192.168.11.44/24

Press <ENTER> to continue.

QEMU Guest - Netgate Device ID: d85c39be769955fdc197

*** Welcome to pfSense 2.7.2-RELEASE (amd64) on pfSense ***

WAN (wan) -> vtnet0 -> v4: 192.168.11.44/24
LAN (lan) -> vtnet1 ->

- | | |
|-----------------------------------|----------------------------------|
| 0) Logout (SSH only) | 9) pfTop |
| 1) Assign Interfaces | 10) Filter Logs |
| 2) Set interface(s) IP address | 11) Restart webConfigurator |
| 3) Reset webConfigurator password | 12) PHP shell + pfSense tools |
| 4) Reset to factory defaults | 13) Update from console |
| 5) Reboot system | 14) Enable Secure Shell (sshd) |
| 6) Halt system | 15) Restore recent configuration |
| 7) Ping host | 16) Restart PHP-FPM |
| 8) Shell | |

Enter an option: █

*** Welcome to pfSense 2.7.2-RELEASE (amd64) on pfSense ***

WAN (wan) -> vtnet0 -> v4: 192.168.11.44/24
LAN (lan) -> vtnet1 ->

- | | |
|-----------------------------------|----------------------------------|
| 0) Logout (SSH only) | 9) pfTop |
| 1) Assign Interfaces | 10) Filter Logs |
| 2) Set interface(s) IP address | 11) Restart webConfigurator |
| 3) Reset webConfigurator password | 12) PHP shell + pfSense tools |
| 4) Reset to factory defaults | 13) Update from console |
| 5) Reboot system | 14) Enable Secure Shell (sshd) |
| 6) Halt system | 15) Restore recent configuration |
| 7) Ping host | 16) Restart PHP-FPM |
| 8) Shell | |

Enter an option: 2

Available interfaces:

- 1 - WAN (vtnet0 - static)
- 2 - LAN (vtnet1)

Enter the number of the interface you wish to configure: 2

Configure IPv4 address LAN interface via DHCP? (y/n) n

- | | |
|----------------|----------------------------------|
| 6) Halt system | 15) Restore recent configuration |
| 7) Ping host | 16) Restart PHP-FPM |
| 8) Shell | |

Enter an option: 2

Available interfaces:

- 1 - WAN (vtnet0 - static)
- 2 - LAN (vtnet1)

Enter the number of the interface you wish to configure: 2

Configure IPv4 address LAN interface via DHCP? (y/n) n

Enter the new LAN IPv4 address. Press <ENTER> for none:

> 192.168.1.1

Subnet masks are entered as bit counts (as in CIDR notation) in pfSense.

e.g. 255.255.255.0 = 24
255.255.0.0 = 16
255.0.0.0 = 8

Enter the new LAN IPv4 subnet bit count (1 to 32):

> 24

```
For a WAN, enter the new LAN IPv4 upstream gateway address.  
For a LAN, press <ENTER> for none:  
>  
  
Configure IPv6 address LAN interface via DHCP6? (y/n) n  
  
Enter the new LAN IPv6 address. Press <ENTER> for none:  
>  
  
Do you want to enable the DHCP server on LAN? (y/n) y  
Enter the start address of the IPv4 client address range: 192.168.1.2  
Enter the end address of the IPv4 client address range: 192.168.1.254  
Disabling IPv6 DHCPD...  
  
Please wait while the changes are saved to LAN...  
Reloading filter...  
Reloading routing configuration...  
DHCPD...  
  
The IPv4 LAN address has been set to 192.168.1.1/24  
You can now access the webConfigurator by opening the following URL in your web  
browser:  
        http://192.168.1.1/  
  
Press <ENTER> to continue.
```

Create: Virtual Machine

General

OS

System

Disks

CPU

Memory

Network

Confirm

Node:

siopve-grp1

Resource Pool:

C419-GRP3

VM ID:

2039

Name:

pfsense-client

Help

Advanced

Back

Next

Create: Virtual Machine

General

OS

System

Disks

CPU

Memory

Network

Confirm

☒ Use CD/DVD disc image file (iso)

Storage: iso

ISO image: 3.0-amd64-netinst.iso

Guest OS:

Type: Linux

Version: 6.x - 2.6 Kernel

☐ Use physical CD/DVD Drive

☐ Do not use any media

Advanced ☐

Back

Next

Edit: Network Device

Bridge: vmbr0

Model: VirtIO (paravirtualized)

VLAN Tag: 434

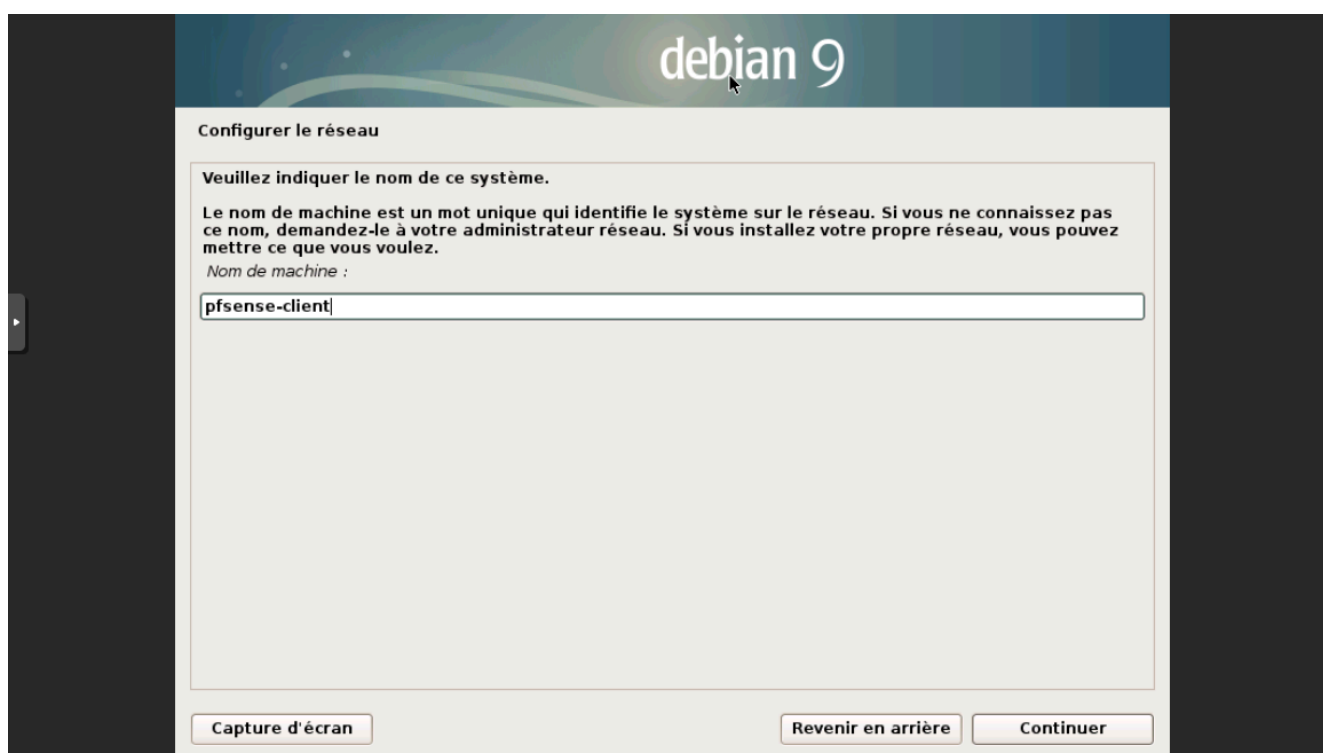
MAC address: BC:24:11:29:43:2E

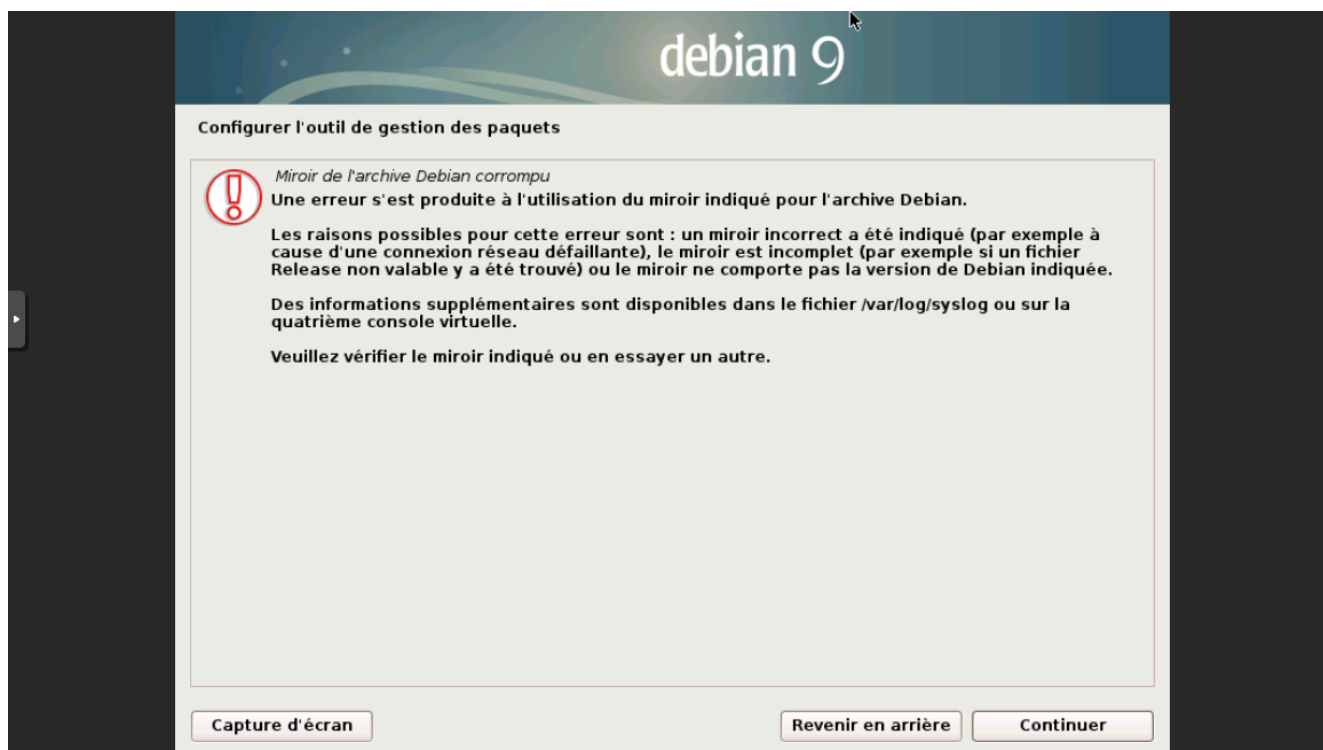
Firewall: ☒

Help

Advanced ☐

OK





Clone VM 2004

Target node:

siopve-grp1

VM ID:

2040

Name:

pfsense-client

Resource Pool:

C419-GRP3

Target Storage:

local-lvm

Format:

Raw disk image (raw)

Help

Clone

Clone VM 2006

Target node:

siopve-grp1

Target Storage:

local-lvm

VM ID:

2041

Format:

Raw disk image (raw)

Name:

pfsense-client

Resource Pool:

C419-GRP3

Help

Clone

Edit: Network Device

Bridge:

vmbro

Model:

VirtIO (paravirtualized)

VLAN Tag:

434

MAC address:

auto

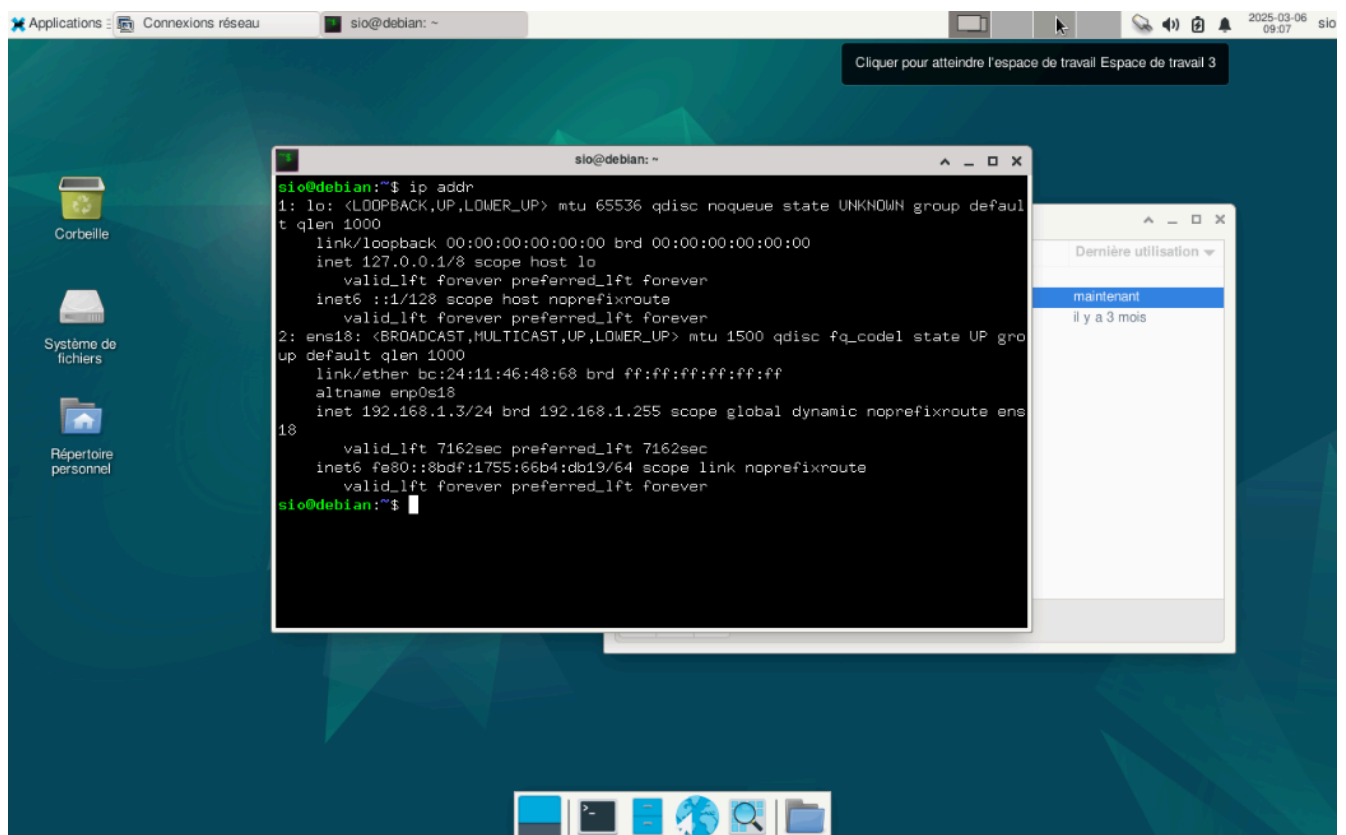
Firewall:

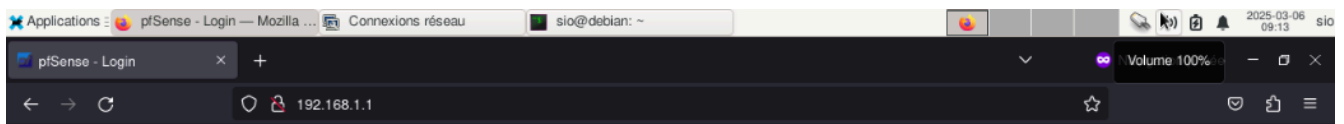
☐

Help

Advanced ☐

OK



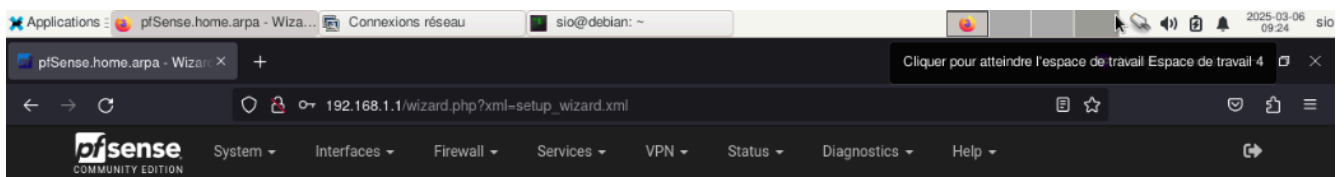


pfSense Login to pfSense

SIGN IN

SIGN IN

pfSense is developed and maintained by Netgate. © ESF 2004 - 2025 View license.



WARNING: The 'admin' account password is set to the default value. [Change the password in the User Manager.](#)

Wizard / **pfSense Setup** / ?

pfSense Setup

Welcome to pfSense® software!

This wizard will provide guidance through the initial configuration of pfSense.

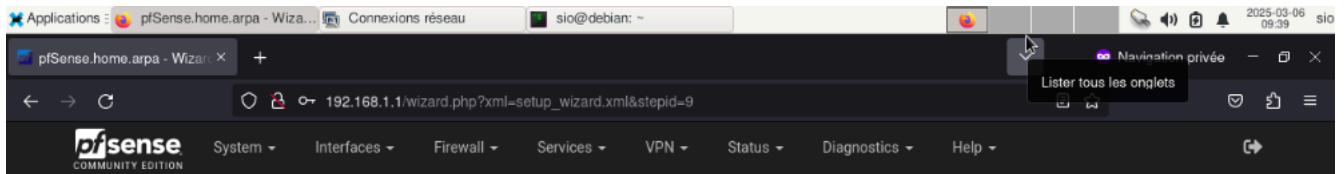
The wizard may be stopped at any time by clicking the logo image at the top of the screen.

pfSense® software is developed and maintained by Netgate®

[Learn more](#)

>> Next

pfSense is developed and maintained by Netgate. © ESF 2004 - 2025 View license.



Wizard / pfSense Setup / Wizard completed.

Step 9 of 9

Wizard completed.

Congratulations! pfSense is now configured.

We recommend that you check to see if there are any software updates available. Keeping your software up to date is one of the most important things you can do to maintain the security of your network.

[Check for updates](#)

Remember, we're here to help.

[Click here](#) to learn about Netgate 24/7/365 support services.

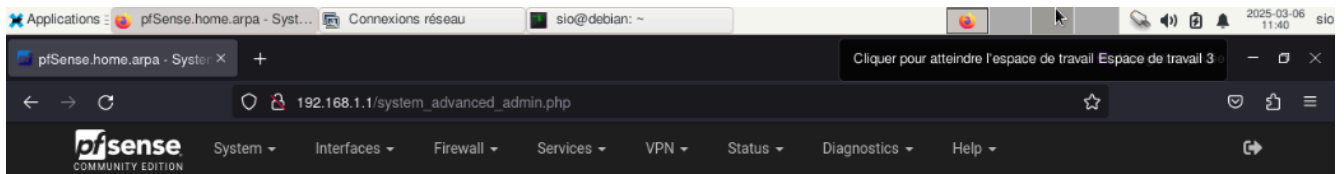
User survey

Please help all the people involved in improving and expanding pfSense software by taking a moment to answer this short survey (all answers are anonymous)

[Anonymous User Survey](#)

Useful resources.

- Learn more about Netgate's product line, services, and pfSense software from our [website](#)
- To learn about Netgate appliances and other offers, [visit our store](#)
- Become part of the pfSense community. Visit our [forum](#)
- [Subscribe to our newsletter](#) for regular updates, information, software announcements and special offers



System / Advanced / Admin Access

[Admin Access](#) [Firewall & NAT](#) [Networking](#) [Miscellaneous](#) [System Tunables](#) [Notifications](#)

webConfigurator

Protocol ☒ HTTP

☐ HTTPS (SSL/TLS)

TCP port

Enter a custom port number for the webConfigurator above to override the default (80 for HTTP, 443 for HTTPS). Changes will take effect immediately after save.

Max Processes

2

Enter the number of webConfigurator processes to run. This defaults to 2. Increasing this will allow more users/browsers to access the GUI concurrently.

WebGUI redirect

☐ Disable webConfigurator redirect rule

When this is unchecked, access to the webConfigurator is always permitted even on port 80, regardless of the listening port configured. Check this box to disable this automatically added redirect rule.

OCSP Must-Staple

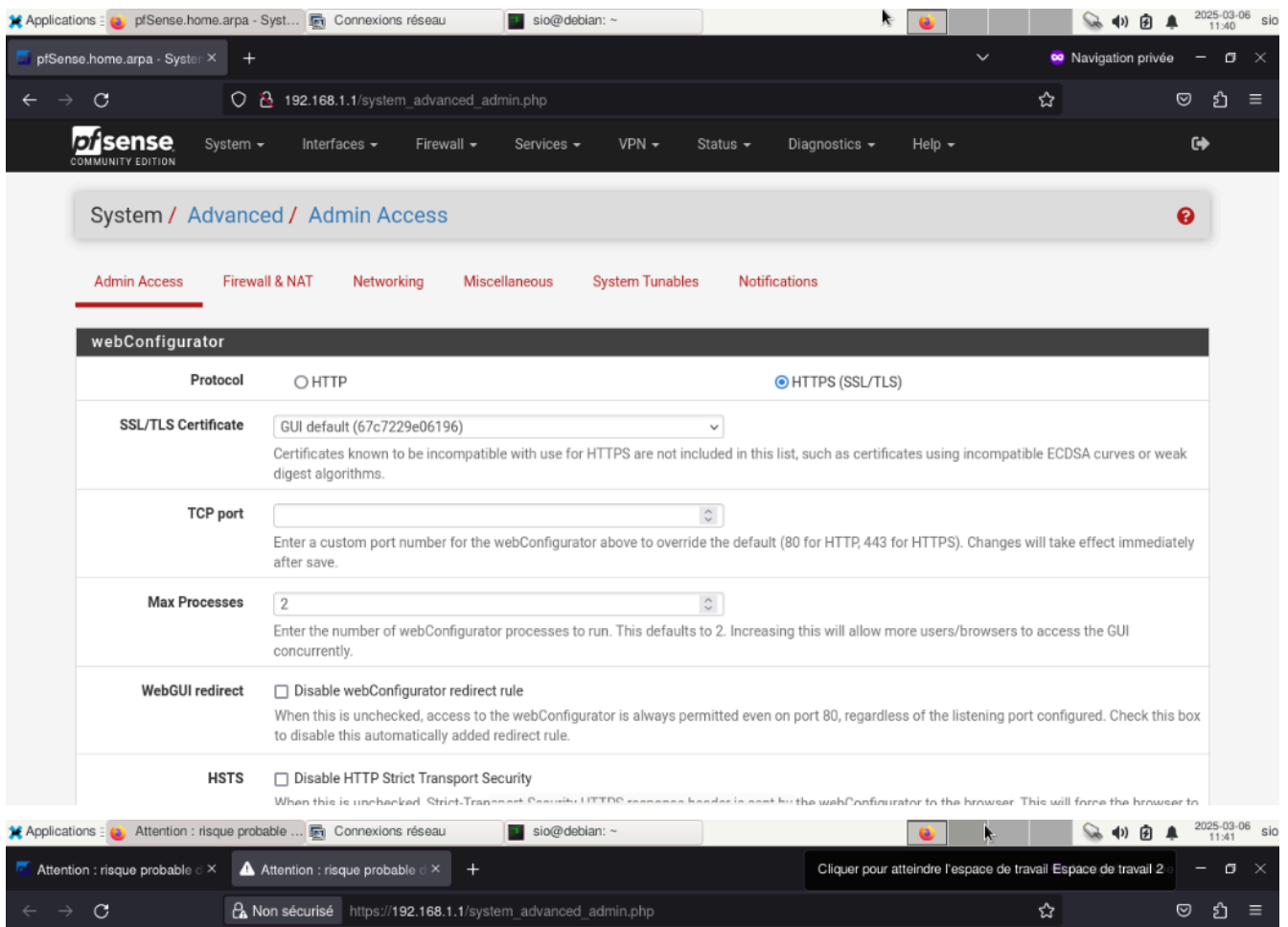
☐ Force OCSP Stapling in nginx

When this is checked, OCSP Stapling is forced on in nginx. Remember to upload your certificate as a full chain, not just the certificate, or this option will be ignored by nginx.

WebGUI Login Autocomplete

☒ Enable webConfigurator login autocomplete

When this is checked, login credentials for the webConfigurator may be saved by the browser. While convenient, some security standards require this



Attention : risque probable de sécurité

Firefox a détecté une menace de sécurité potentielle et n'a pas poursuivi vers **192.168.1.1**. Si vous accédez à ce site, des attaquants pourraient dérober des informations comme vos mots de passe, e-mails, ou données de carte bancaire.

[En savoir plus...](#)

[Retour \(recommandé\)](#)

[Avancé...](#)

192.168.1.1 utilise un certificat de sécurité invalide.

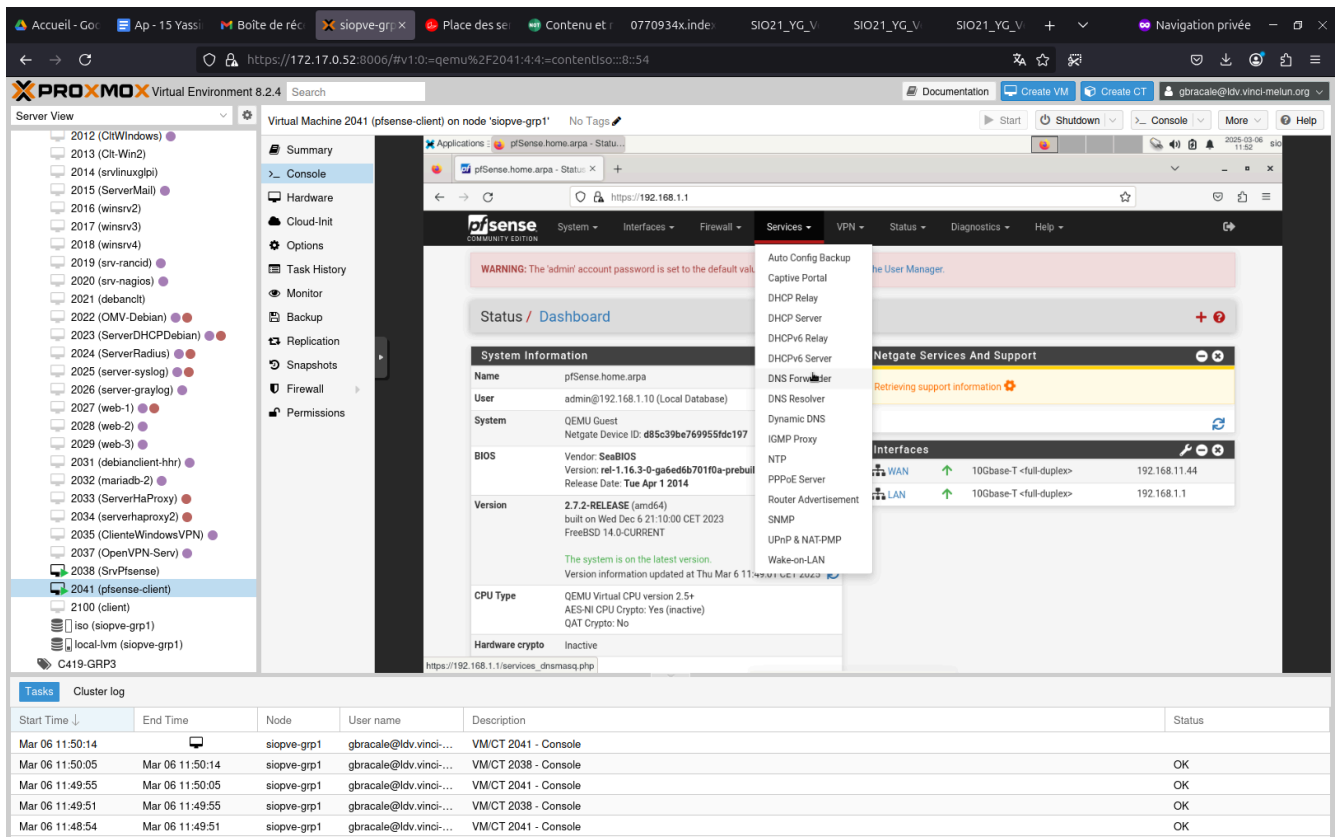
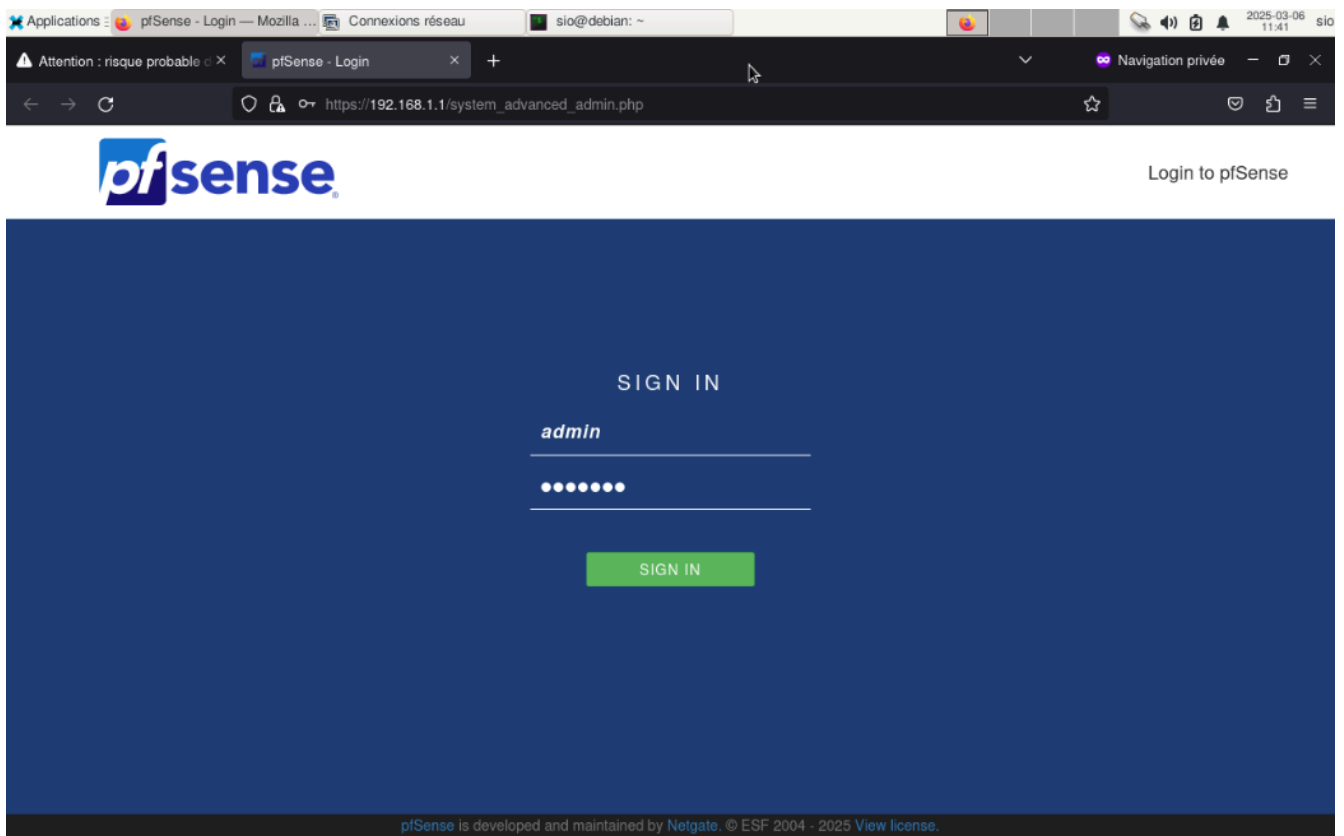
Le certificat n'est pas sûr car il est auto-signé.

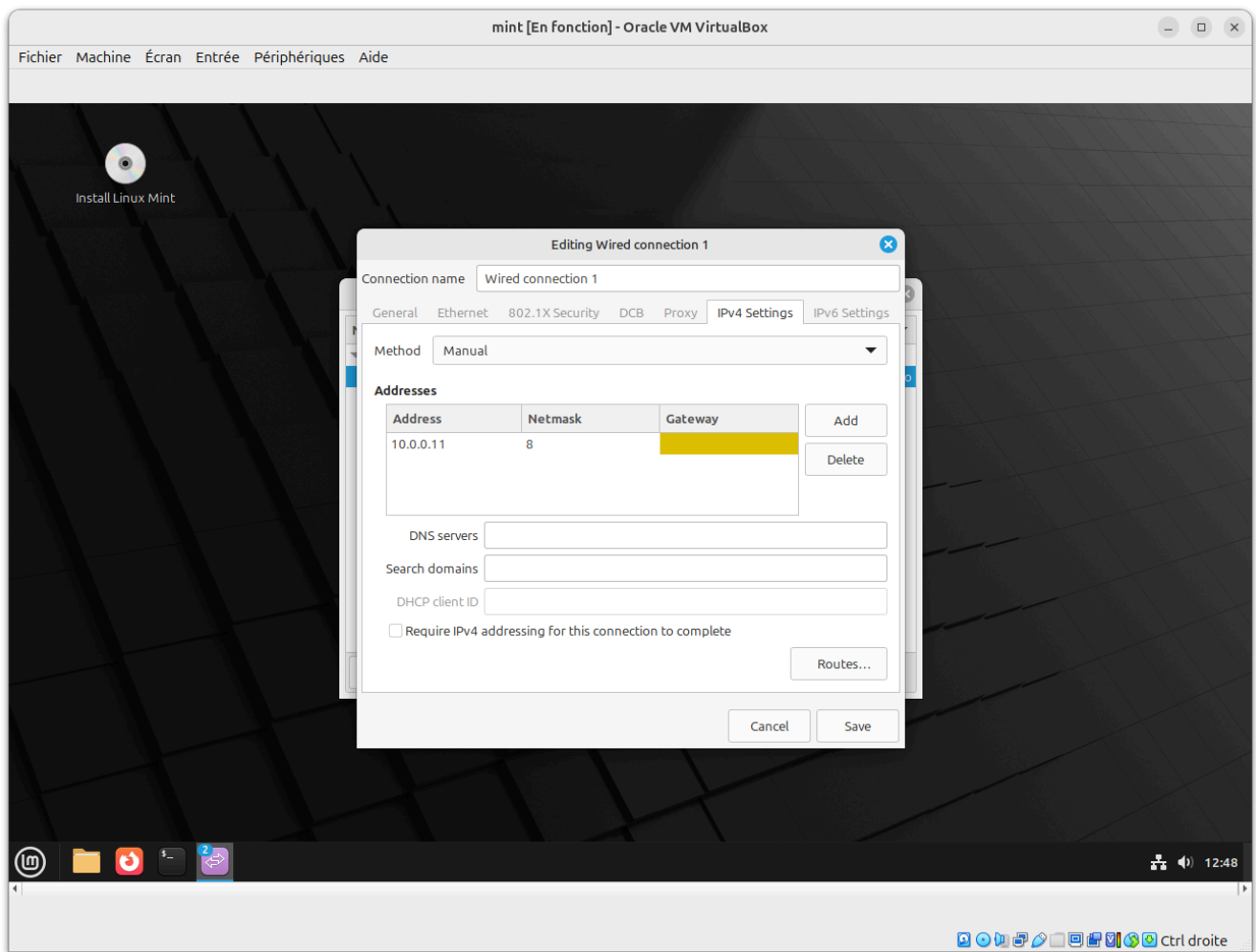
Code d'erreur : [MOZILLA_PKIX_ERROR_SELF_SIGNED_CERT](#)

[Afficher le certificat](#)

[Retour \(recommandé\)](#)

[Accepter le risque et poursuivre](#)





Applications : pfSense.home.arpa - Statu... sio@debian: ~

pfSense.home.arpa - Status x Erreur de chargement de la x Paramètres x Cliquer pour glisser - pfSense.home.arpa - Status: DHCP Leases - Mozilla Firefox »

https://192.168.1.1/status_dhcp_leases.php

pfSense COMMUNITY EDITION System Interfaces Firewall Services VPN Status Diagnostics Help

WARNING: The 'admin' account password is set to the default value. Change the password in the User Manager.

Status / DHCP Leases

ISC DHCP has reached end-of-life and will be removed in a future version of pfSense. Visit [System > Advanced > Networking](#) to switch DHCP backend.

Search

Search Term All

Enter a search string or *nix regular expression to filter entries.

Leases

	IP Address	MAC Address	Hostname	Description	Start	End	Actions
✓ ↑	192.168.1.11	00:1b:53:1a:35:36	ap		2025/03/06 13:12:33	2025/03/06 15:12:33	<input type="button" value="+"/> <input type="button" value="+"/>
✓ ↑	192.168.1.10	bc:24:11:46:48:68	debian		2025/03/06 12:48:30	2025/03/06 14:48:30	<input type="button" value="+"/> <input type="button" value="+"/>

Lease Utilization

Interface	Pool Start	Pool End	Used	Capacity	Utilization
LAN	192.168.1.10	192.168.1.245	2	236	0% of 236

Applications : Erreur de chargement de la... sio@debian: ~

pfSense.home.arpa - Status x Erreur de chargement de la x Paramètres x Erreur de Cliquer pour atteindre l'espace de travail Espace de travail 3

192.168.1.11

192.168.1.11

Ce site vous demande de vous connecter.

Nom d'utilisateur

Mot de passe

La connexion

Une erreur est survenue

- Le site est peut-être temporairement indisponible ou surchargé. Réessayez plus tard ;
- Si vous n'arrivez à naviguer sur aucun site, vérifiez la connexion au réseau de votre ordinateur ;
- Si votre ordinateur ou votre réseau est protégé par un pare-feu ou un proxy, assurez-vous que Firefox est autorisé à accéder au Web.

192.168.1.11

Applications : Cisco IOS Series AP - Ho... sio@debian: ~

pfSense.home.arpa - Statu... Erreur de chargement de la Paramètres Cisco IOS Series AP - Home Ordinateur

192.168.1.11

Cisco Systems Cisco Aironet 1100 Series Access Point

HOME
EXPRESS SET-UP
EXPRESS SECURITY
NETWORK MAP
ASSOCIATION
NETWORK INTERFACES
SECURITY
SERVICES
WIRELESS SERVICES
SYSTEM SOFTWARE
EVENT LOG

Hostname ap ap uptime is 1 minute

Home: Summary Status

Association

Clients: 0 Repeaters: 0

Network Identity

IP Address 192.168.1.11

MAC Address 001b.531a.3536

Network Interfaces

Interface	MAC Address	Transmission Rate
FastEthernet	001b.531a.3536	100Mb/s
Radio0-802.11G	001b.53b9.f230	54.0Mb/s

Event Log

Time	Severity	Description
Mar 1 00:00:39.662	Information	Interface BV11 assigned DHCP address 192.168.1.11, mask 255.255.255.0, hostname ap
Mar 1 00:00:31.529	Notification	Line protocol on Interface BV11, changed state to up
Mar 1 00:00:30.576	Notification	SNMP agent on host ap is undergoing a cold start
Mar 1 00:00:30.576	Notification	System restarted --
Mar 1 00:00:27.437	Notification	Line protocol on Interface Dot11Radio0, changed state to down
Mar 1 00:00:26.437	Notification	Interface Dot11Radio0, changed state to administratively down
Mar 1 00:00:08.350	Notification	Line protocol on Interface FastEthernet0, changed state to up

En attente de 192.168.1.11...

Applications : pfSense.home.arpa - Servi... sio@debian: ~

pfSense.home.arpa - Servi... pfSense.home.arpa - Servi... Cisco IOS Series AP - Network

https://192.168.1.1/services_dnsmasq.php

pfSense COMMUNITY EDITION System Interfaces Firewall Services VPN Status Diagnostics Help

WARNING: The 'admin' account password is set to the default value. Change the password in the User Manager.

Services / DNS Forwarder

The DNS forwarder configuration has been changed.
The changes must be applied for them to take effect.

ISC DHCP has reached end-of-life and will be removed in a future version of pfSense. Visit [System > Advanced > Networking](#) to switch DHCP backend.

General DNS Forwarder Options

Enable	<input checked="" type="checkbox"/> Enable DNS forwarder
DHCP Registration	<input type="checkbox"/> Register DHCP leases in DNS forwarder If this option is set machines that specify their hostname when requesting a DHCP lease will be registered in the DNS forwarder, so that their name can be resolved. The domain in System: General Setup should also be set to the proper value.
Static DHCP	<input type="checkbox"/> Register DHCP static mappings in DNS forwarder If this option is set, IPv4 DHCP static mappings will be registered in the DNS forwarder so that their name can be resolved. The domain in System: General Setup should also be set to the proper value.
Prefer DHCP	<input type="checkbox"/> Resolve DHCP mappings first If this option is set DHCP mappings will be resolved before the manual list of names below. This only affects the name given for a reverse lookup

Applications : pfSense.home.arpa - Servi... sio@debian: ~

pfSense.home.arpa - Servi... pfSense.home.arpa - Servi... Cisco IOS Series AP - Network + jeudi 06 mars 2025

https://192.168.1.1/services_captiveportal.php?zone=groupe_3_portail

pfSense
COMMUNITY EDITION

System Interfaces Firewall Services VPN Status Diagnostics Help

WARNING: The 'admin' account password is set to the default value. Change the password in the User Manager.

Services / Captive Portal / Groupe_3_Portail / Configuration

Configuration MACs Allowed IP Addresses Allowed Hostnames Vouchers High Availability File Manager

Captive Portal Configuration

Enable ☒ Enable Captive Portal

Description
A description may be entered here for administrative reference (not parsed).

Interfaces
Select the interface(s) to enable for captive portal.

Maximum concurrent connections
Limits the number of concurrent connections to the captive portal HTTP(S) server. This does not set how many users can be logged in to the captive portal, but rather how many connections a single IP can establish to the portal web server.

Idle timeout (Minutes)
Clients will be disconnected after this amount of inactivity. They may log in again immediately, though. Leave this field blank for no idle timeout.

Applications : pfSense.home.arpa - Servi... sio@debian: ~

pfSense.home.arpa - Servi... pfSense.home.arpa - Servi... Cisco IOS Series AP - Network + Cliquer pour atteindre l'espace de travail Espace de travail 3

https://192.168.1.1/services_captiveportal_vouchers.php?zone=groupe_3_portail

Voucher Rolls

Roll #	Minutes/Ticket	# of Tickets	Comment	Actions
--------	----------------	--------------	---------	---------

Create, Generate and Activate Rolls with Vouchers

Enable ☒ Enable the creation, generation and activation of rolls with vouchers

Create, Generate and Activate Rolls with Vouchers

Voucher Public Key
Paste an RSA public key (64 Bit or smaller) in PEM format here. This key is used to decrypt vouchers. [Generate new keys](#)

Voucher Private Key
Paste an RSA private key (64 Bit or smaller) in PEM format here. This key is only used to generate encrypted vouchers and doesn't need to be available if the vouchers have been generated offline.

Character set
Tickets are generated with the specified character set. It should contain printable characters (numbers, lower case and upper case letters) that are hard to confuse with others. Avoid e.g. 0/O and l/1.

of Roll bits

Applications : pfSense.home.arpa - Servi... sio@debian: ~

pfSense.home.arpa - Servi... pfSense.home.arpa - Servi... Cisco IOS Series AP - Network

https://192.168.1.1/services_captiveportal_vouchers_edit.php?zone=groupe_3_portail

Ce réseau nécessite que vous vous connectiez à un compte pour utiliser Internet. Afficher la page de connexion du réseau

pfSense COMMUNITY EDITION System Interfaces Firewall Services VPN Status Diagnostics Help

WARNING: The 'admin' account password is set to the default value. Change the password in the User Manager.

Services / Captive Portal / Groupe_3_Portail / Vouchers / Edit

Voucher Rolls

Roll #
Enter the Roll# (0..1023) found on top of the generated/printed vouchers




Minutes per ticket
Defines the time in minutes that a user is allowed access. The clock starts ticking the first time a voucher is used for authentication.

Count
Enter the number of vouchers (1..1023) found on top of the generated/printed vouchers. WARNING: Changing this number for an existing Roll will mark all vouchers as unused again

Comment
Can be used to further identify this roll. Ignored by the system.

Configuration MACs Allowed IP Addresses Allowed Hostnames **Vouchers** High Availability File Manager

Voucher Rolls

Roll #	Minutes/Ticket	# of Tickets	Comment	Actions
1	10	10		  

QEMU (pfsense-client) -

https://172.17.0.52:8006/?console=kvm&novnc=1&vmid=2041&vmname=pfsense-c

Applications 3 Firefox 2 LibreOffice 7.4 Connexions réseau

vouchers_groupe_3_portail_roll1(

Fichier Édition Affichage Insertion Format Styles Feuille Données Outils Fenêtre Aide

Libération Sans 10 pt G I S A B

A1 fx # Voucher Tickets 1..10 for Roll 1

i Vous exécutez pour la première fois la version 7.4 de LibreOffice, voulez-vous en découvrir ce qu'il y a

	A	B
1	# Voucher Tickets 1..10 for Roll 1	
2	# Nr of Roll Bits 10	
3	# Nr of Ticket Bits 10	
4	# Nr of Checksum Bits 5	
5	# Magic initializer 196690456 (38 Bits used)	
6	# Character Set used 2345678abcdefghijklmnopqrstuvwxyzABCDEFGHIJKLMNOPQRSTUVWXYZ	
7	#	
8	Rystnp4PbxC	
9	GGc5YSmdZtc	
10	xKjFwwsr83F	
11	cpgBXRvvTtw	
12	M4FkxLiYtCD	
13	6Vt4HrKPSwp	
14	6uAwwxZKGG3	
15	cvSwLxHAeHS	
16	3pwkhF2zr8	
17	JDNDvbZHh7m	

Rendre le portail captif disponible, et également avoir y accès sur le téléphone

Applications

Cisco IOS Series AP - No...

Import de texte - [voucher...

Connexions réseau

Zutty

2025-03-06 15:40 sio

Erreur de chargem

192.168.14.26/dot11+

Captive Portal Login P

Erreur de chargem

pfSense.home.a

Cliquer pour atteindre l'espace de travail Espace de travail 4

← → ↻

192.168.14.26/ap_network-if_802-11_c.shtml

☆

📄

⌵

☰

Cisco Systems

Cisco Aironet 1100 Series Access Point

ap uptime is 35 minutes

HOME

EXPRESS SET-UP

EXPRESS SECURITY

NETWORK MAP

ASSOCIATION

NETWORK INTERFACES

IP Address

FastEthernet

Radio0-802.11G

SECURITY

SERVICES

WIRELESS SERVICES

SYSTEM SOFTWARE

EVENT LOG

RADIO0-802.11G STATUS

DETAILED STATUS

SETTINGS

CARRIER BUSY TEST

Hostname ap

Network Interfaces: Radio0-802.11G Settings

Enable Radio:

☒ Enable

☐ Disable

Current Status (Software/Hardware):

Disabled

Down

Role in Radio Network:

☒ Access Point

☐ Access Point (Fallback to Radio Shutdown)

☐ Access Point (Fallback to Repeater)

☐ Repeater

☐ Workgroup Bridge

☐ Scanner

Data Rates:

Best Range

Best Throughput

Default

1.0Mb/sec	<input checked="" type="radio"/> Require	<input type="radio"/> Enable	<input type="radio"/> Disable
2.0Mb/sec	<input checked="" type="radio"/> Require	<input type="radio"/> Enable	<input type="radio"/> Disable
5.5Mb/sec	<input checked="" type="radio"/> Require	<input type="radio"/> Enable	<input type="radio"/> Disable
* 6.0Mb/sec	<input type="radio"/> Require	<input checked="" type="radio"/> Enable	<input type="radio"/> Disable
* 9.0Mb/sec	<input type="radio"/> Require	<input checked="" type="radio"/> Enable	<input type="radio"/> Disable
11.0Mb/sec	<input checked="" type="radio"/> Require	<input type="radio"/> Enable	<input type="radio"/> Disable
* 12.0Mb/sec	<input type="radio"/> Require	<input checked="" type="radio"/> Enable	<input type="radio"/> Disable
* 18.0Mb/sec	<input type="radio"/> Require	<input checked="" type="radio"/> Enable	<input type="radio"/> Disable
* 24.0Mb/sec	<input type="radio"/> Require	<input checked="" type="radio"/> Enable	<input type="radio"/> Disable
* 25.0Mb/sec	<input type="radio"/> Require	<input checked="" type="radio"/> Enable	<input type="radio"/> Disable